



LINE SHEET 2025.11



Side table HK+01

Designer : Hiromichi Konno

Size: W440 × D440 × H530 mm

Weight: 2.5 kg

Materials: Aluminum top plate, Cast aluminum joint, oak/walnut legs

Features:

Hand-polished aluminum surface with warm, paper-like texture

Cast brass joints for durability and stability

Available in multiple finishes (Walnut, Oak, White Rust, Red Rust, Blue Rust, Black Rust)



KANAYA Co., Ltd

〒933-0841

2-5 Kanayamachi, Takaoka City, Toyama

Tel: 070-5630-2933 Fax: 0766-22-0320

Mail: info@kanaya-t.jp

<https://kanaya-t.jp/>



Side table HK+02

Designer : Hiromichi Konno

Size: W470 × D470 × H400 mm

Weight: 3.5 kg

Materials: Legs: Aluminum, Standard top plate: MDF, Traditional top plate: Brass/Copper

Features:

Cast aluminum tray table with slender legs for a contemporary and sophisticated form

Top plate can be detached and used independently as a tray

Traditional coloring techniques applied to brass or copper top plates

【Standard top plate】



Black

【Traditional top plate】



Silver



Copper



White



Blue



Black



KANAYA Co., Ltd

〒933-0841

2-5 Kanayamachi, Takaoka City, Toyama

Tel: 070-5630-2933 Fax: 0766-22-0320

Mail: info@kanaya-t.jp

<https://kanaya-t.jp/>



Dish part



Aluminum White rust Blue rust Black rust

Support/leg



Oak Walnut



Oak



Oak, White rust finish



Oak, Blue rust finish



Walnut



Walnut, White rust finish



Walnut, Black rust finish



Walnut, Blue rust finish

Three tier table HK+03

Designer : Hiromichi Konno

Size: W510 × D460 × H730 mm

Weight: 5.0 kg

Materials: Dish part: Aluminum casting , Support/Legs: Walnut/Oak (oil finish) , Joint: Brass casting

Features:

Hand-polished aluminum top plate creates a soft, paper-like texture instead of a cold impression

Cast brass joints ensure strength and stability

Different table heights provide versatility for use with chairs or sofas



KANAYA Co., Ltd

〒933-0841

2-5 Kanayamachi, Takaoka City, Toyama

Tel: 070-5630-2933 Fax: 0766-22-0320

Mail: info@kanaya-t.jp

<https://kanaya-t.jp/>



Magazine rack HK+04

Designer : Hiromichi Konno

Size: W440 × D250 × H300 mm

Weight: 1.385 kg

Materials: Brass casting, Outside: Leather, Inside: Synthetic leather

Features:

The more it is used, the greater the visual appeal of the materials

Simple, minimal yet elegant brass frame beautifully complements the leather's color tones

Serves as a refined and distinctive centerpiece in any space



KANAYA Co., Ltd

〒933-0841

2-5 Kanayamachi, Takaoka City, Toyama

Tel: 070-5630-2933 Fax: 0766-22-0320

Mail: info@kanaya-t.jp

<https://kanaya-t.jp/>



Coat stand HK+05

Designer : Hiromichi Konno

Size: W390 × D430 × H1730 mm

Weight: 4.0 kg

Materials: Top plate, bowl, bracket: Aluminum casting, Support: Aluminum pipe, Legs: Walnut (oil finish)

Features:

Multi-functional coat stand with integrated table and bowl

Provides convenient storage for everyday items such as bags, keys, and wallets

Cast aluminum bowl and top plate are carefully hand-polished by skilled craftsmen



Walnut,white



A combination of white rust-colored pillars that look like they have been roughly painted, and a shiny silver rust color.



The bowl for storing small items and the table have a silver rust finish.



Rusty silver



Rusty white



Walnut,black



A combination of matte black and rusty blue



The bowl for storing small items and the table are rusty-colored.



Rusty Black



Rusty Blue



KANAYA Co., Ltd

〒933-0841

2-5 Kanayamachi, Takaoka City, Toyama

Tel: 070-5630-2933 Fax: 0766-22-0320

Mail: info@kanaya-t.jp

<https://kanaya-t.jp/>



Floor lamp HK+06

Designer : Hiromichi Konno

Size: W390 × D430 × H1543 mm

Weight: 5.0 kg

Materials: Top plate, bowl, bracket, shade: Aluminum casting, Support: Aluminum pipe , Legs: Walnut (oil finish)

Features:

A new type of furniture that integrates practical elements into lighting

Includes a table for placing cups and a bowl for storing small items, sweets, or plants

Creates a warm atmosphere and adds depth to the space when placed in a corner



Walnut,white rust



The bowl and table for storing small items are made of polished aluminum that resembles Japanese paper.



Aluminum



White rust



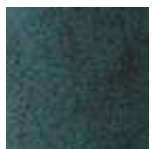
Walnut,black



The bowl for storing small items and the table are a quaint blue rust-colored color.



Black



Blue rust



KANAYA Co., Ltd

〒933-0841

2-5 Kanayamachi, Takaoka City, Toyama

Tel: 070-5630-2933 Fax: 0766-22-0320

Mail: info@kanaya-t.jp

<https://kanaya-t.jp/>



Tray series SO+01

Designer : SOMA DESIGN (Takeshi Fukui・Tamae Hirokawa)

Size: W390 × D390 × H465 mm

Weight: 1.35kg

Materials: Tray: Aluminum plate (W375 × D375 × H15 mm, 450 g) Frame: Aluminum casting (W390 × D390 × H450 mm, 750 g) , Plate: Acrylic plate (W326 × D326 × H2 mm, 150 g)

Features:

Colorful tray table designed by a fashion designer

Sharp frame inspired by a Japanese sword gives a striking, sculptural presence

Inner plate features Japanese flower motifs such as morning glory, plum, and daisy chrysanthemum, adding an oriental aesthetic

【Tray】



Black



Silver

【Frame】



Black



Silver



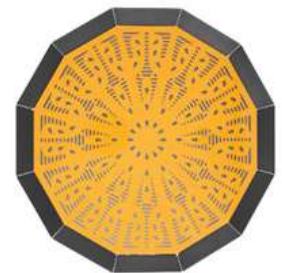
Pink UME



White ASAGAO



Violet ASAGAO



Orange HINAGIKU



Magenta HANAKANMURI



Yellow HIMAWARI



KANAYA Co., Ltd

〒933-0841

2-5 Kanayamachi, Takaoka City, Toyama

Tel: 070-5630-2933 Fax: 0766-22-0320

Mail: info@kanaya-t.jp

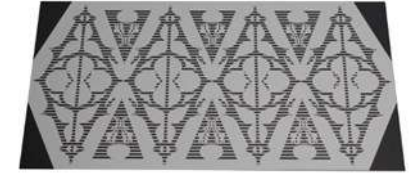
<https://kanaya-t.jp/>



Tray silver



Light green



Silver



Light blue



Black



Tray black



Navy



Brown



Square Tray SO+02

Designer : SOMA DESIGN (Takeshi Fukui・Tamae Hirokawa)

Size% Weight: Tray: W430 × D159 × H15 mm, 490 g, Inner plate: W378 × D231 × H2 mm, 210 g

Materials: Aluminum, Acrylic

Features:

Sharp, organic frame reminiscent of stems and leaves creates a striking presence

Tray features colorful and vibrant expressions, perfect for adding charm to entertaining settings

Plates can be freely combined, allowing versatile styling options



KANAYA Co., Ltd

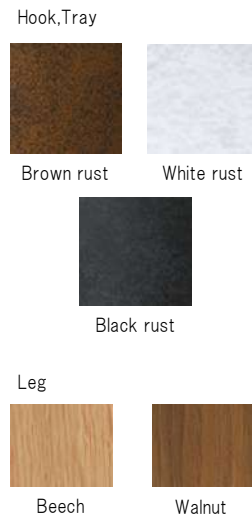
〒933-0841

2-5 Kanayamachi, Takaoka City, Toyama

Tel: 070-5630-2933 Fax: 0766-22-0320

Mail: info@kanaya-t.jp

<https://kanaya-t.jp/>



Coat stand MK+01

Designer : Mikiya Kobayashi

Size: W365 × D320 × H1640 mm

Weight: 2.5kg

Materials: Top/Joint: Aluminum casting, Legs: Beech

Features:

Simple design that combines rust-colored aluminum with the natural beauty of wood grain

Lightweight structure makes it easy to move and reposition

A stylish yet practical and functional addition to any space



KANAYA Co., Ltd

〒933-0841

2-5 Kanayamachi, Takaoka City, Toyama

Tel: 070-5630-2933 Fax: 0766-22-0320

Mail: info@kanaya-t.jp

<https://kanaya-t.jp/>



Beech, White rust finish



Walnut, White rust finish



Beech, Brown rust finish



Walnut, Brown rust finish



Beech, Black rust finish



Walnut, Black rust finish



Beech



Walnut



White rust



Brown rust



Black rust

Umbrella stand MK+02

Designer : Mikiya Kobayashi

Size: W223 × D223 × H600 mm

Weight: 2.7kg

Materials: Base: Brass casting , Top: Aluminum casting , Support: Beech/Walnut

Features:

Simple and elegant umbrella stand design combining rust-colored metal with natural wood

Central pillar supports both the top ring and base, ensuring efficient umbrella storage

A refined and practical addition to entrances or interior spaces



KANAYA Co., Ltd

〒933-0841

2-5 Kanayamachi, Takaoka City, Toyama

Tel: 070-5630-2933 Fax: 0766-22-0320

Mail: info@kanaya-t.jp

<https://kanaya-t.jp/>



Towel stand MK+03

Designer : Mikiya Kobayashi

Size: W500 × D170 × H745 mm

Weight: 2.3kg

Materials: Holder: Aluminum casting, Support: Walnut/Oak, Legs: Brass casting

Features:

Simple towel rack combining rust-colored metal with natural wood

Support pillars available in six variations: walnut or beech wood

Compact and versatile, suitable for bathrooms, kitchens, and other spaces



Beech, Rust white finish



Beech, Rust brown finish



Beech, Rust black finish



Walnut, Rust white finish



Walnut, Rust brown finish



Walnut, Black finish



Beech



Walnut



Rust white



Rust brown



Rust black



KANAYA Co., Ltd

〒933-0841

2-5 Kanayamachi, Takaoka City, Toyama

Tel: 070-5630-2933 Fax: 0766-22-0320

Mail: info@kanaya-t.jp

<https://kanaya-t.jp/>



Beech, Rust brown finish



Walnut, Rust brown finish



Beech, Rust black finish



Walnut, Rust black finish



Beech



Walnut



Rust brown



Rust black



Toilet paper holder MK+04

Designer : Mikiya Kobayashi

Size: W300 × D120 × H700 mm

Weight: 1.7kg

Materials: Holder: Aluminum casting, Support: Walnut/Beech, Legs: Brass casting

Features:

Toilet paper holder with a refined design that can be placed anywhere

Constructed from three materials: cast aluminum, wood, and cast brass, blending seamlessly into any space

Water-resistant aluminum handle can also be used as a towel rack



KANAYA Co., Ltd

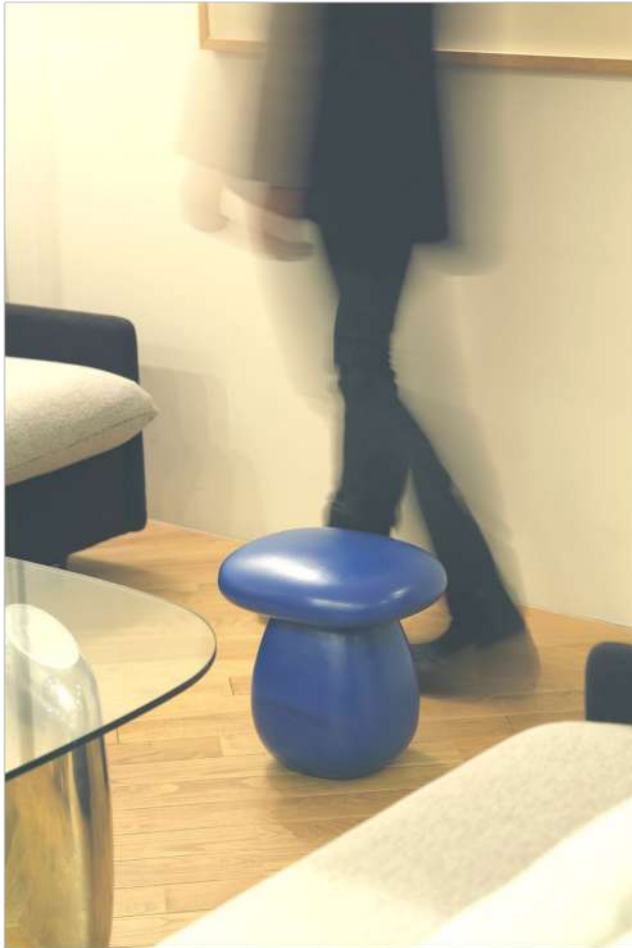
〒933-0841

2-5 Kanayamachi, Takaoka City, Toyama

Tel: 070-5630-2933 Fax: 0766-22-0320

Mail: info@kanaya-t.jp

<https://kanaya-t.jp/>



Mound stool HS+01

Designer : Hisakazu Shimizu

Size: W300 × D250 × H300 mm

Weight: 6.0kg

Materials: Aluminum casting

Features:

Stool that embraces the weight of metal to express a new sense of “cast metal feel”

Shape created by stacking “square circles” halfway between a sphere and a cube, resulting in a familiar mushroom-like impression

Combines functionality as a stool with artistic and sculptural value



Light blue



Pink



White



Beige



Light green



KANAYA Co., Ltd

〒933-0841

2-5 Kanayamachi, Takaoka City, Toyama

Tel: 070-5630-2933 Fax: 0766-22-0320

Mail: info@kanaya-t.jp

<https://kanaya-t.jp/>



Clover tray HK+51

Designer : Hiromichi Konno

Aluminum: W123 × D119 × H19 mm / 110 g

Ceramic: W123 × D119 × H19 mm / 105 g

Features:

Tray with a four-leaf clover motif, symbolizing happiness and good luck

Ceramic tray suitable not only for small items but also for condiments, soy sauce, pickles, and more

Perfect for decorating desks, cabinets, or dining tables while bringing a touch of joy into daily life



Ceramic



Aluminum



KANAYA Co., Ltd

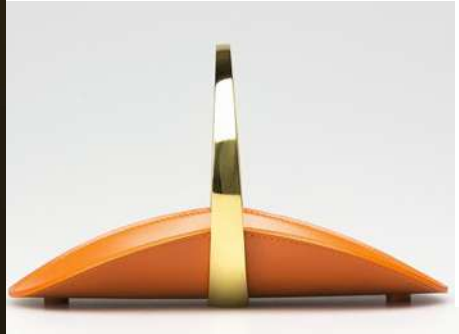
〒933-0841

2-5 Kanayamachi, Takaoka City, Toyama

Tel: 070-5630-2933 Fax: 0766-22-0320

Mail: info@kanaya-t.jp

<https://kanaya-t.jp/>



Orange



Green



Black



Wine red

EN Tray HK+52

Designer : Hiromichi Konno

Size: W200 × D120 × H115 mm

Weight: 0.45kg

Materials: Ring: Brass casting, Tray: Leather

Features:

Born from the concept of “EN” (a predestined encounter), symbolizing the bond between craftsmanship and design
Meticulously crafted through collaboration between a metal-casting artisan and a leather craftsman
A harmonious balance of two contrasting materials: solid brass and soft leather



KANAYA Co., Ltd

〒933-0841

2-5 Kanayamachi, Takaoka City, Toyama

Tel: 070-5630-2933 Fax: 0766-22-0320

Mail: info@kanaya-t.jp

<https://kanaya-t.jp/>



Animal charm SO+52

Designer : SOMA DESIGN

Size & Weight: Bird: 53 × 34 × 40 mm / 65 g Rabbit: 44 × 18 × 32 mm / 85 g Deer: 67 × 12 × 38 mm / 40 g

Materials: Bronze casting

Features:

Small animal figures made with the lost-wax casting method, allowing extremely detailed and delicate forms

Traditional coloring and finishing techniques by skilled craftsmen create a refined, authentic expression

Can be used as a paperweight or message stand on desks, counters, or entryways

【Black】



Bird

Rabbit

Deer

【White】



Bird

Rabbit

Deer



KANAYA Co., Ltd

〒933-0841

2-5 Kanayamachi, Takaoka City, Toyama

Tel: 070-5630-2933 Fax: 0766-22-0320

Mail: info@kanaya-t.jp

<https://kanaya-t.jp/>



Rabbit



Tiger



Horse

Animal key ring SO+52

Designer : SOMA DESIGN

Size & Weight: Rabbit: 40 × 30 × 135 mm / 60 g Tiger: 40 × 30 × 125 mm / 60 g Horse: 40 × 30 × 140 mm / 60 g

Materials: Aluminum casting

Features:

Animal figures designed to highlight natural forms with carefully crafted details in the eyes, mouth, and ears, creating a sense of familiarity
Special inking surface treatment on the back enhances expressions and develops character over time with use
Anchor-shaped fittings further highlight the craftsmanship and playful design



KANAYA Co., Ltd

〒933-0841

2-5 Kanayamachi, Takaoka City, Toyama

Tel: 070-5630-2933 Fax: 0766-22-0320

Mail: info@kanaya-t.jp

<https://kanaya-t.jp/>



Bowl series HM+51

Designer : Hikaru Mori

Size& Weight: Vase: W154 × D154 × H300 mm /1.362kg Wine cooler: W205 × D205 × H225 mm
Shallow Bowl: W204 × D204 × H92 mm / 0.591kg

Materials: Aluminum casting

Features:

Made of aluminum with traditional colors, featuring a unique rust-like textured surface

Durable and water resistant, suitable for semi-outdoor use such as terraces

Available in three types—vase, wine cooler, and shallow bowl—to decorate your table or room according to the atmosphere of the occasion



KANAYA Co., Ltd

〒933-0841

2-5 Kanayamachi, Takaoka City, Toyama

Tel: 070-5630-2933 Fax: 0766-22-0320

Mail: info@kanaya-t.jp

<https://kanaya-t.jp/>



Mirror



Hairline



Black



Orange



Blue



Yellow

Shoehorn HM+51 long

Designer : Mikiya Kobayashi

Size: Shoehorn: W29 × D27 × H672 mm Base: W120 × D120 × H26 mm

Weight: 1.7kg

Materials: Shoehorn: Aluminum casting Base: Glass

Features:

Elegant aluminum shoehorn designed for use while standing, with a smooth curve that gently embraces the heel
Accompanied by a **glass stand** reminiscent of a shoehorn floating in water, adding a sense of lightness and sophistication to the space
The cushioned color finish enhances both visual elegance and tactile comfort, creating a harmonious blend of design and functionality



KANAYA Co., Ltd

〒933-0841

2-5 Kanayamachi, Takaoka City, Toyama

Tel: 070-5630-2933 Fax: 0766-22-0320

Mail: info@kanaya-t.jp

<https://kanaya-t.jp/>



Shoehorn HM+51 long

Designer : Mikiya Kobayashi

Size: Shoehorn: W34 × D20 × H240 mm Base: W120 × D120 × H26 mm

Weight: 0.78kg

Materials: Shoehorn: Aluminum casting Base: Glass

Features:

Compact aluminum shoehorn, carefully polished for a smooth and elegant finish

The gently curved design fits comfortably on the heel, combining functionality with refined aesthetics

Its understated elegance also makes it a sophisticated accent piece for your entrance



Hairline



Mirror



KANAYA Co., Ltd

〒933-0841

2-5 Kanayamachi, Takaoka City, Toyama

Tel: 070-5630-2933 Fax: 0766-22-0320

Mail: info@kanaya-t.jp

<https://kanaya-t.jp/>



Desk magazine MK+52

Designer : Mikiya Kobayashi

Size: W120 × D65 × H220 mm

Weight: 0.733kg

Materials: Aluminum casting, Wood

Features:

Elegant magazine rack crafted from natural wood and rust-colored metal, reflecting a refined simplicity in design. Walnut wood with brown rust conveys weight and depth, while peach wood with white rust adds a subtle sense of luxury. Versatile as a bookend, mail storage, or menu stand, perfect for high-grade interiors.



Walnut, Rust brown finish



Beech, Rust silver finish



KANAYA Co., Ltd

〒933-0841

2-5 Kanayamachi, Takaoka City, Toyama

Tel: 070-5630-2933 Fax: 0766-22-0320

Mail: info@kanaya-t.jp

<https://kanaya-t.jp/>



Small pod TR+51

Designer : TRUNK

Size: W80 × D80 × H60 mm

Weight: 0.3kg

Materials: Brass casting

Features:

A refined small pod crafted from brass casting, hand-turned and meticulously polished

Versatile use: as a flower vase, candle holder, incense burner, or small container, suitable for both Japanese and Western-style interiors

Vibrant enamel colors peek through the delicate openwork, making it a striking decorative object even when not in use



KANAYA Co., Ltd

〒933-0841

2-5 Kanayamachi, Takaoka City, Toyama

Tel: 070-5630-2933 Fax: 0766-22-0320

Mail: info@kanaya-t.jp

<https://kanaya-t.jp/>



Jewelry tray TR+52

Designer : TRUNK

Size: W95 × D95 × H55 mm

Weight: 0.125kg

Materials: Aluminum casting, Leather

Features:

Exquisitely crafted jewelry tray combining carefully cast aluminum with domestically processed Japanese leather, designed with a refined Japanese aesthetic. Ideal for placing watches, rings, necklaces, and other accessories, with a central protrusion to prevent necklaces from tangling. The matte aluminum is durable and water-resistant, suitable for kitchens, bathrooms, or as a decorative flower display.



Pink



Blue



Beige



KANAYA Co., Ltd

〒933-0841

2-5 Kanayamachi, Takaoka City, Toyama

Tel: 070-5630-2933 Fax: 0766-22-0320

Mail: info@kanaya-t.jp

<https://kanaya-t.jp/>



SAKURASAKU HT+51

Designer : Kosho Tsuboi

Size& Weight: ROCK: W90 × D90 × H85 mm / 285 g SAKE: W65 × D65 × H65 mm / 140g

Materials: Tin casting

Features:

Takaoka tinware "Sakura Saku" creates a delicate cherry blossom pattern from condensation when enjoying cold drinks

Tin is naturally antibacterial, resists oxidation, and enhances the flavor of water and alcohol

With excellent thermal conductivity, tin conforms gently to the hand, providing a luxurious tactile experience



SAKE



ROCK



KANAYA Co., Ltd

〒933-0841

2-5 Kanayamachi, Takaoka City, Toyama

Tel: 070-5630-2933 Fax: 0766-22-0320

Mail: info@kanaya-t.jp

<https://kanaya-t.jp/>



Flower vase “Sorori” KA+51

Designer : KANAYA

Size: W70 × D70 × H270 mm

Weight: 0.6kg

Materials: Brass casting,

Features:

A refined Sorori-style flower vase, inspired by the Rikyū aesthetic passed down for over 400 years

The elegant form is achieved by hand-finishing each cast piece on a lathe, preserving a sense of perfected balance and sophistication

Resistant to discoloration, it commands presence as both a flower vase and a decorative object



Red rust finish



Blue rust finish



White rust finish



Black rust finish



KANAYA Co., Ltd

〒933-0841

2-5 Kanayamachi, Takaoka City, Toyama

Tel: 070-5630-2933 Fax: 0766-22-0320

Mail: info@kanaya-t.jp

<https://kanaya-t.jp/>



L



M



S



Round

Ice-cream KA+52

Size& Weight:

L: W153 × D110 × H45 mm / 120 g

M: W125 × D95 × H35 mm / 100 g

S: W106 × D82 × H34 mm / 70 g

Round: W125 × D125 × H45 mm / 145 g

Materials: Tin casting

Features:

Handmade tin cups with a delicate, washi-like texture, combining high craftsmanship with sophisticated design

Tin's excellent thermal conductivity softens ice cream naturally, enhancing its flavor

Versatile design that complements both Japanese and Western table settings, making them elegant for any occasion



KANAYA Co., Ltd

〒933-0841

2-5 Kanayamachi, Takaoka City, Toyama

Tel: 070-5630-2933 Fax: 0766-22-0320

Mail: info@kanaya-t.jp

<https://kanaya-t.jp/>



Small plate "Nunome"



Small plate "Oboro"



Small plate "Hiware"

Ice-cream KA+52

Size: W68 × D68 × H15 mm

Weight: 30g

Materials: Tin casting,

Features:

Charming small tin dish, versatile for use as a soy sauce dish, chopstick rest, or for other small items

Available in three distinct textures—**Nunome**, **Oboro**, and **Kooriwari**—to enjoy the tactile quality of tin

Flexible material allows slight reshaping for practical and creative use



KANAYA Co., Ltd

〒933-0841

2-5 Kanayamachi, Takaoka City, Toyama

Tel: 070-5630-2933 Fax: 0766-22-0320

Mail: info@kanaya-t.jp

<https://kanaya-t.jp/>



【全4色】



Clear



Brown



Rust silver



Bronze

Craft mirror YO selection

Designer : Yuki Okamoto

Size& Weight:

KANADE: H390 × W270 × D100 mm / 1.323kg

HIKARI: H310 × W300 × D100 mm / 1.011kg

IBUKI: H380 × W240 × D100 mm / 1.39kg

Materials: Tin casting

Features:

Crafted by Yūki Okamoto, a blacksmith renowned for his expressive metalwork in Japan and abroad

Polished stainless steel mirrors are precision-cut by specialized local factories, ensuring distortion-free, clear reflection

Each mirror is engraved with a serial number, emphasizing its uniqueness and collectible value



KANAYA Co., Ltd

〒933-0841

2-5 Kanayamachi, Takaoka City, Toyama

Tel: 070-5630-2933 Fax: 0766-22-0320

Mail: info@kanaya-t.jp

<https://kanaya-t.jp/>



KAZARI UTSUWA SH+51

Designer : SHIMOO design

Size& Weight:

W445 × D130 × H60 mm /900g

Materials: Brass casting, Wood

Features:

Crafted by KANAYA, a brand rooted in the tradition of Takaoka copperware, this piece is meticulously finished by skilled artisans to give the metal a soft, warm presence. Available in a clear brass finish as well as traditional Bronze and Sterling Silver colors, it complements both Japanese and Western interiors. It can be used as a refined table arrangement or a display platform.



KANAYA Co., Ltd

〒933-0841

2-5 Kanayamachi, Takaoka City, Toyama

Tel: 070-5630-2933 Fax: 0766-22-0320

Mail: info@kanaya-t.jp

<https://kanaya-t.jp/>

KANAYA — ABOUT US

Metal casting technology of Takaoka Copperware (Toyama Prefecture)

The history of Takaoka copperware began in 1611 when the lord of the Kaga domain, Toshinaga Maeda, called seven foundry craftsmen to Kanaya-cho, Takaoka City in order to promote the prosperity of the town. For more than 400 years, the tradition and techniques have become the foundation of Takaoka's metal industry, and are still passed down by craftsmen today.

A fusion of the old and the new

KANAYA was born in Takaoka in 2012, and works diligently with craftsmen to add design and functionality to carefully crafted metal castings and create products that meet today's lifestyles. Although we are unable to mass produce our products, we are working hard to create our products, recognizing the importance of local production. We are also working on collaboration between production regions with companies that handle different materials. We create products in collaboration with meticulous craftsmen from Hokkaido to Shikoku, using materials such as leather, wood, and glass. Enjoy the texture of carefully selected materials that are made in Japan.

Manufacturing with designers

In the world of metal casting, the beauty of which matures over time, the coloring and painting techniques that create unique textures are rooted in local production areas. His designers, who know everything about product design, have taken advantage of this knowledge to the utmost to create timeless and practical interior products. We hope that our products, which reconfirm the value of traditional techniques and give them a new look, will meet people and create a long and fulfilling time together.

DESIGNERS

HIROMICHI KONNO



紺野弘通

MIKIYA KOBAYASHI



小林幹也

SOMA DESIGN



廣川玉枝

福井武

HIKARU MORI



森ひかる

KOSHO TSUBOI



坪井浩尚

HISAKAZU SHIMIZU



清水久和

YUKI OKAMOTO



岡本祐季

PRODUCED AND DIRECTED BY TOSHIKI KIRIYAMA

プロデュース・監修 桐山登士樹 (TRUNK)

PHOTO GALLERY

